

Together • Upgrade with ERB

Diversified Training Courses for Ethnic Minorities

Course Features

- Conducted in English or Cantonese and supplemented with English training materials
- Conducted in full-time or part-time mode
- Free of charge or with fee subsidies
- Retraining allowance for Placement-tied Courses[▲]
- Placement follow-up service for graduates of Placement-tied Courses[▲]



ERB Course Prospectus



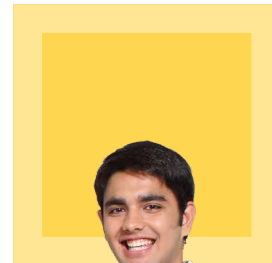
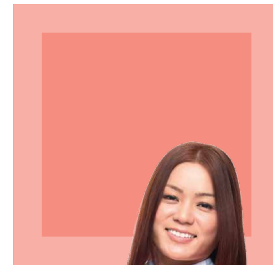
ERB Course Search

The Employees Retraining Board (ERB) is a statutory body which provides training courses and services to eligible employees of Hong Kong* aged 15 or above with educational attainment at sub-degree level or below[#].

[▲] Applicable to eligible trainees with attendance rate of at least 80%.

[#] Flexibility on entry requirements may apply.

^{*} Applicable to those who are lawfully employable and not subject to conditions of stay, including Hong Kong permanent residents and new arrivals.



ERB Hotline 182 182 • www.erb.org • “My ERB” FB • “captaink_erb” IG